



2018

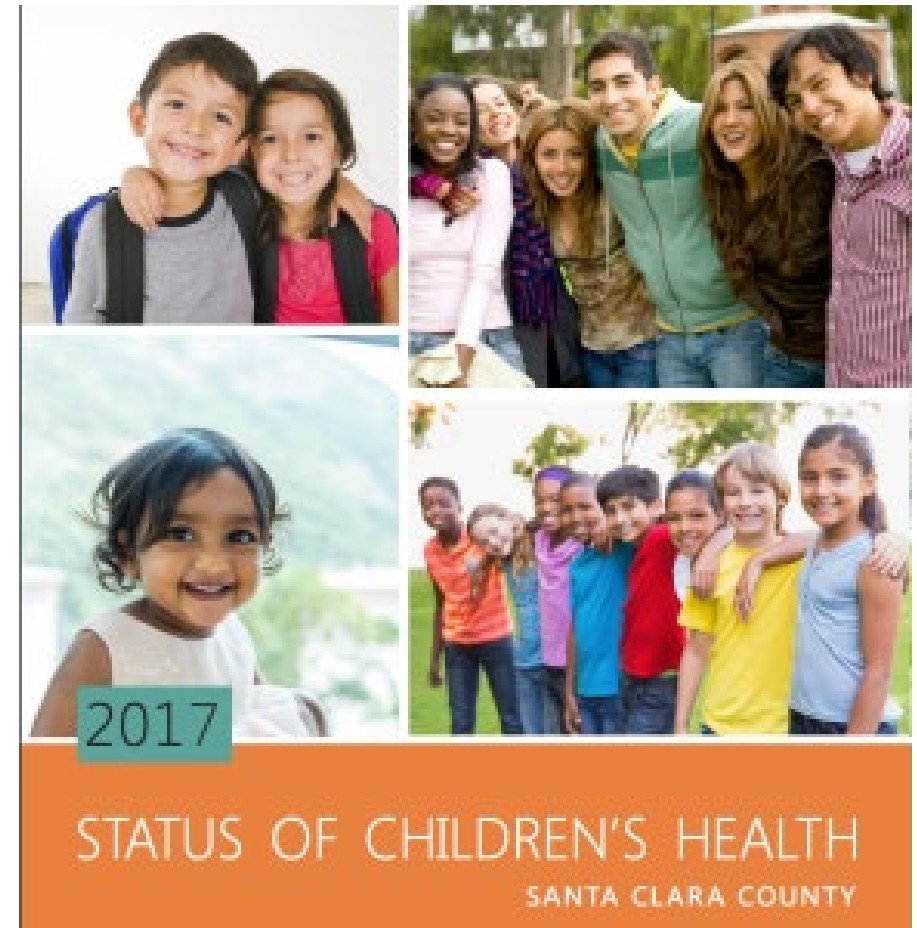


Santa Clara County Children's Health Improvement Plan

November 14, 2018

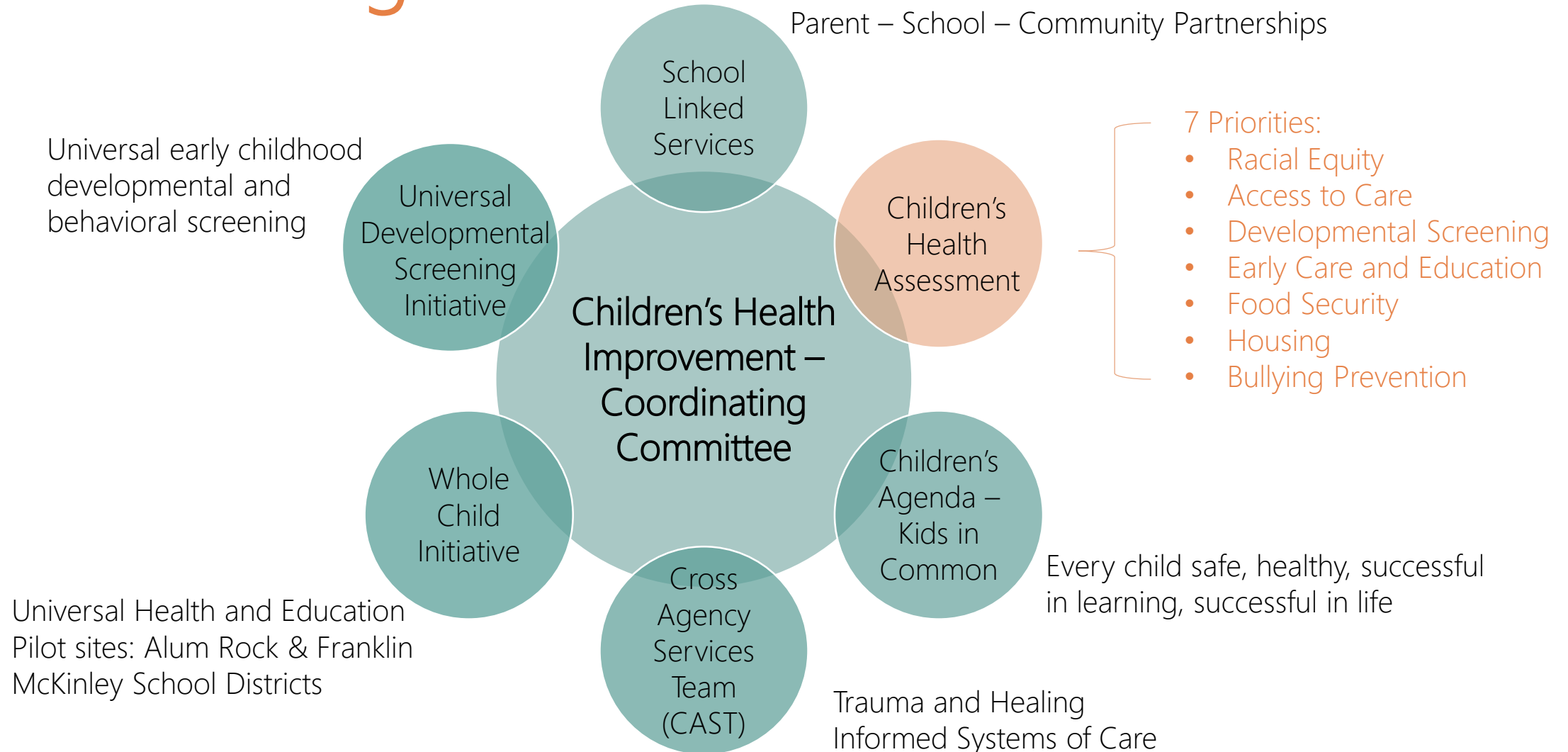
Children's Health Assessment

- The Children's Health Assessment (CHA) was requested in 2015 by the County of Board Supervisors and completed in 2017
- Call to action: create equitable, action-oriented programs, policies and practices to improve the lives of all children, youth and families
- Public Health is coordinating a network of partners working around the 7 priorities identified in the CHA



Priority	Convening Partners
Race and Health Equity	Black Leadership Kitchen Cabinet SCC Office of Cultural Competency Santa Clara County Public Health Department
Access to Care & Oral Health	Collaborative for Oral Health Healthier Kids Foundation Santa Clara County Public Health Department
Developmental Screening	FIRST 5 Santa Clara County Santa Clara County Public Health Department
Early Care and Education	FIRST 5 Santa Clara County Santa Clara County Office of Education
Food Security	Second Harvest Food Bank
Housing	Santa Clara County Office of Supportive Housing
Violence and Bullying Prevention	Santa Clara County Office of Education Santa Clara County Public Health Department

Partner Integration

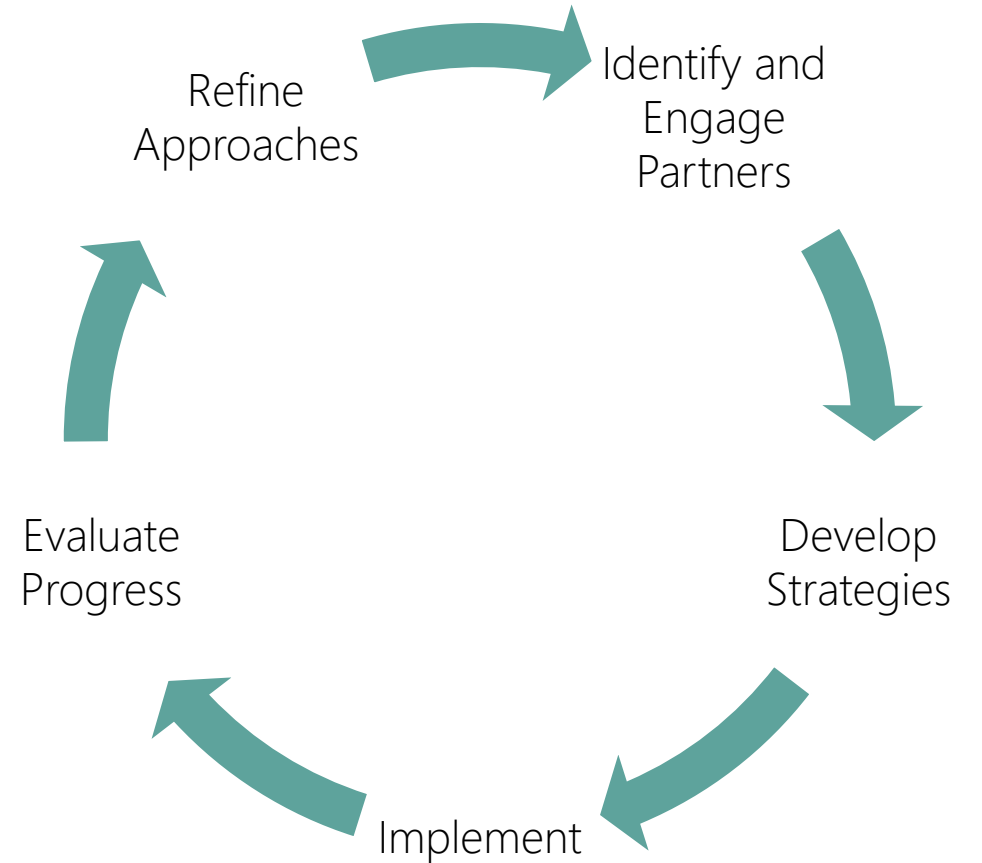


Aligned Structures and Partners

- Children's Nutrition Coalition
 - Collaborative for Oral Health
 - Cultural Responsivity, Diversity & Inclusion Workgroup
 - East San Jose PEACE Partnership
 - Enhancing/Expanding Homelessness Prevention & Housing Strategies for Families and Youth Work Group
 - Family Child Care Education Network
 - Intra-Cultural Competence Committee
 - Juvenile Justice System Collaborative
 - Local Childcare Planning Council
 - Maternal Mental Health Collaborative
 - Office of Immigrant Relations Programs Taskforce
 - Office of Women's Policy Title IX Workgroup
 - PRIME 2.4 Workgroup
 - Public Health Department Health Equity Committee
 - QUALITY MATTERS...a STRONG START for kids Consortium
 - Race and Equity through Prevention Workgroup
 - Safety Net Committee
 - Strong Start Coalition
 - Universal Developmental Screening Initiative Clinical Workgroup
 - Universal Developmental Screening Initiative Systems Workgroup
 - Welcoming Schools Workgroup
 - School Climate Committee
-

Key Approaches

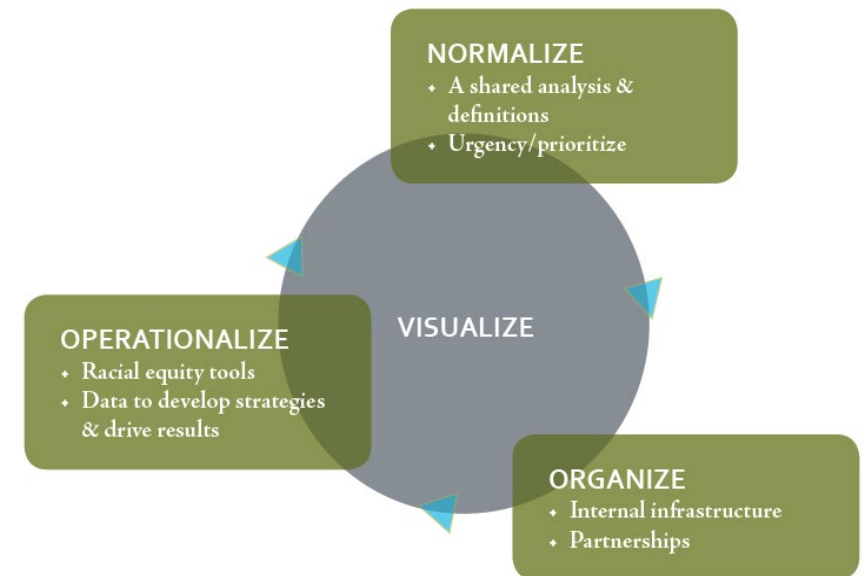
- Iterative planning on a yearly cycle
- Ongoing identification and recruitment of partners and local efforts aligned to plan priorities
- Focus on policy and systems approaches for broad impact and sustainability
- Collaborate across priority areas on policy and resource needs



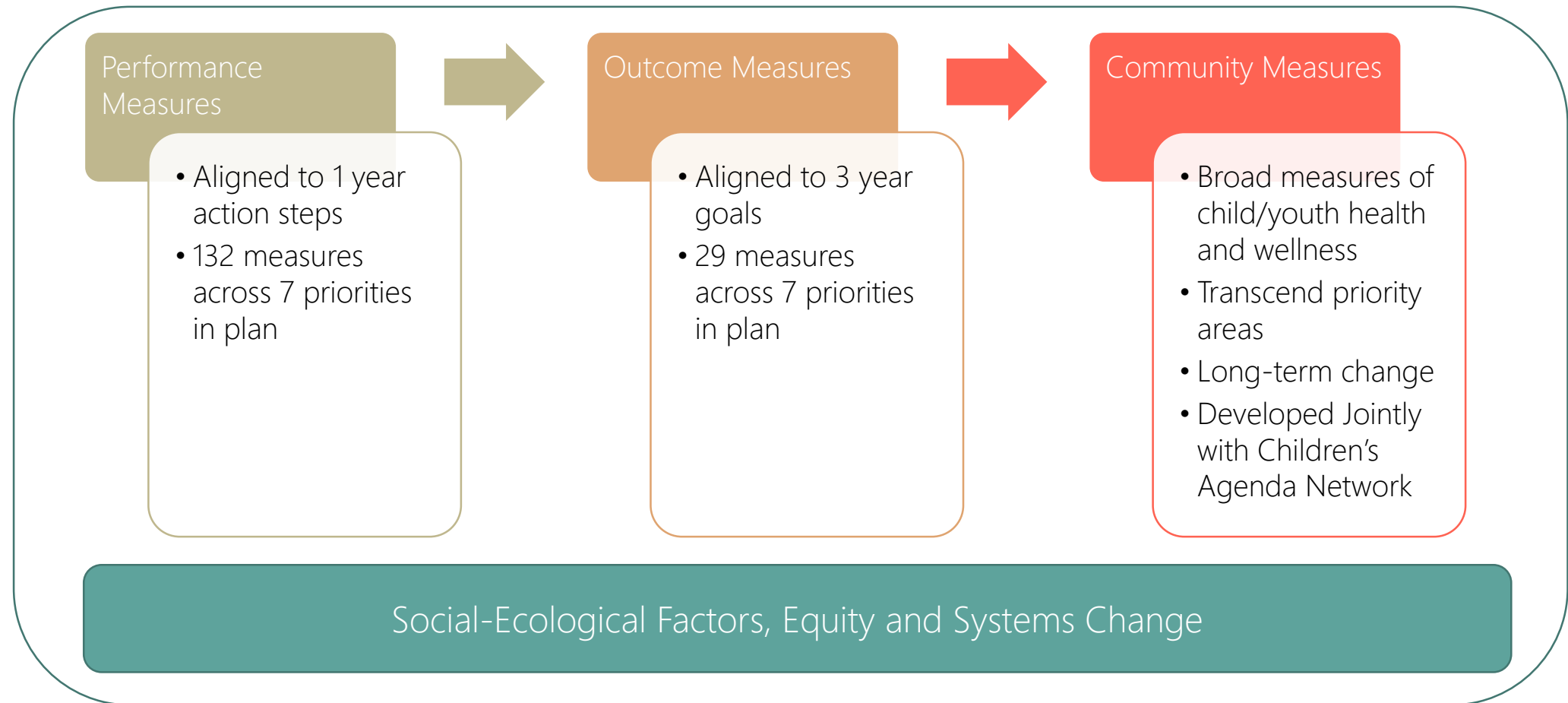
Equity and Community Participation

- Assessment Call to Action prioritized addressing racial equity
- Priority populations for implementation and evaluation include:
 - Families engaged in the foster care system
 - Families and youth engaged in the juvenile justice system
 - Historically disenfranchised communities
- FY19 Key Activities:
 - Providing training and support to integrate racial equity into all seven plan priorities
 - Developing structures for direct community participation for youth, parents and caregivers to assure strategies address community needs

Government Alliance for Racial Equity (GARE) Framework



Focusing on Results



Next Steps

- Continue development of the evaluation plan by December 2018
 - Support quarterly implementation monitoring meetings and data collection tools for the Coordinating Committee
 - Continue racial equity training and TA toward plan revisions for Year 2 (FY20)
 - Establish mechanisms for direct community and youth participation
 - Support all convening partners and their networks in implementing strategies and reporting on success
 - Continue to identify strategies that address the needs of priority populations including systems involved children and youth
-