



Universal Access to Early Childhood
Care, Education & Health Services

The Challenge



Photo credit: SOMOS Mayfair

President Cortese:
“strengthen, scale and
develop **new**
investment strategies in
early learning and
development.”

The Opportunity

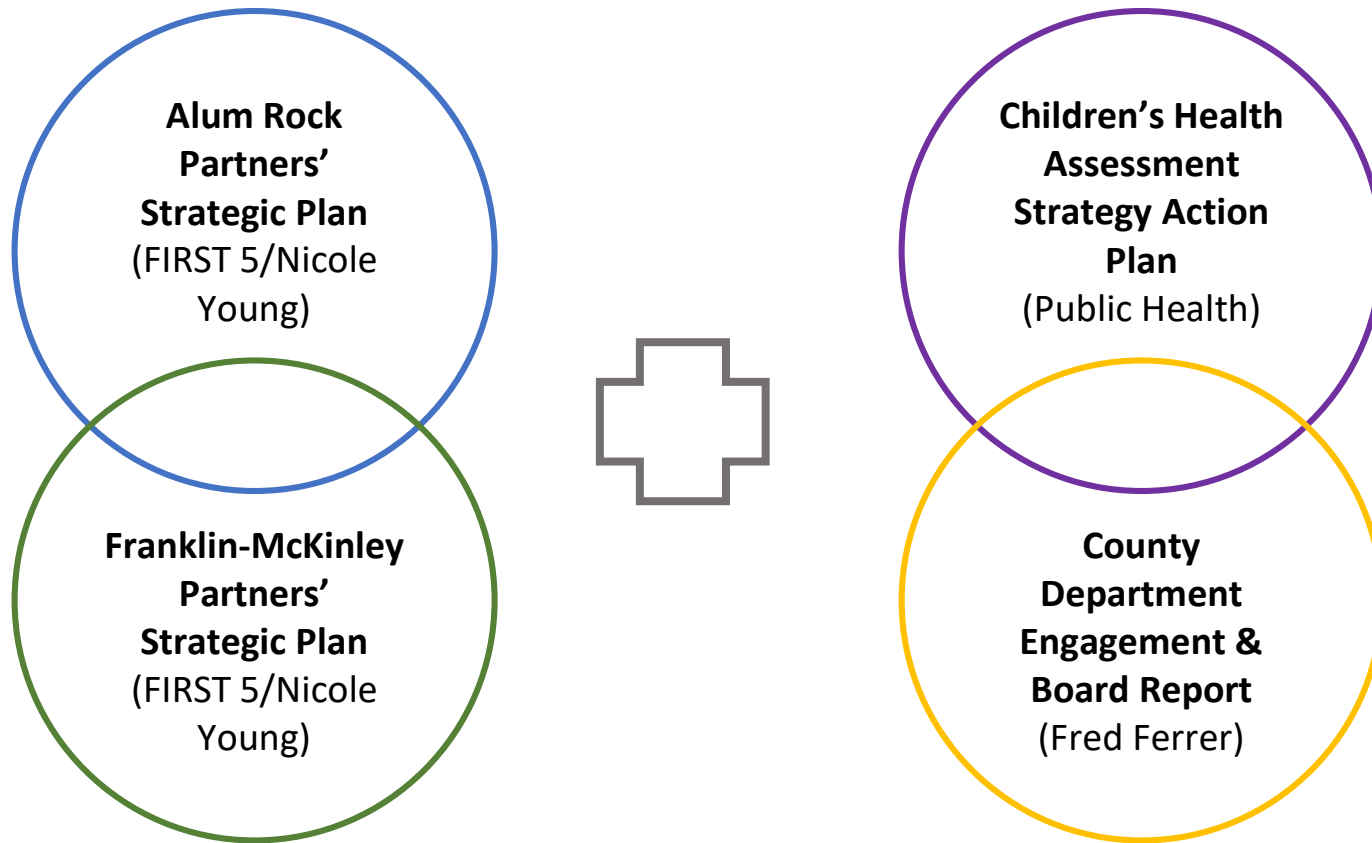
Supervisor Ken
Yeager's referral

Report on pilot plan
to create universal
access to **quality
child care,
education, and
health care** from
prenatal – 3rd grade



Photo credit: Grail Family Services

Coordinated Planning Efforts for alignment and integration



Goals of the pilots

Integrate County services into the early childhood delivery model in conjunction with the two pilot districts

Improve universal access in Franklin-McKinley and Alum Rock School Districts

Develop and modify the systems to achieve service integration and universal access

Apply a Whole Child/ Whole Family perspective to improve child wellbeing, learning, and health

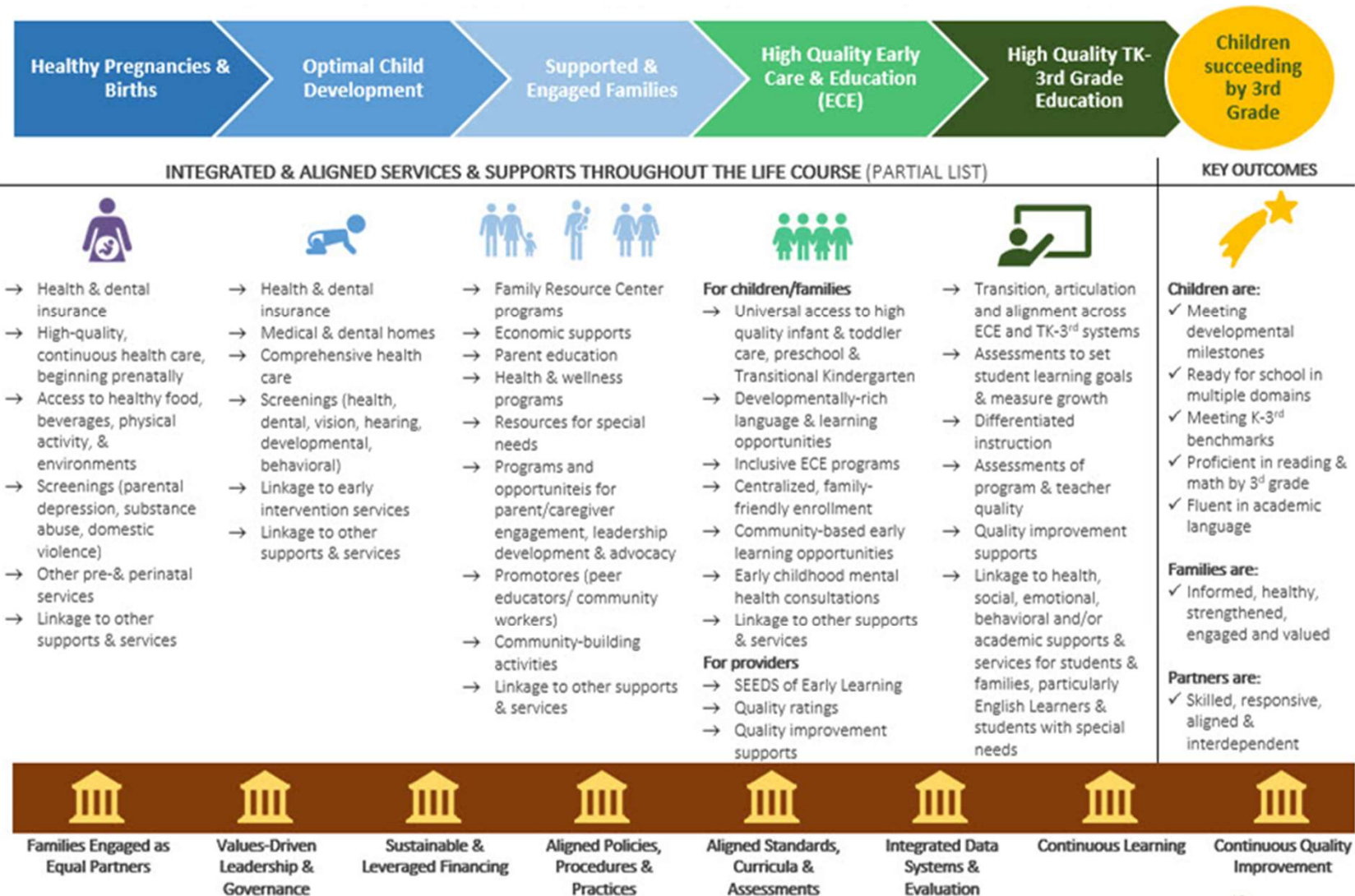
5 District Strategic Goals

Goal 1	Align and integrate systems
Goal 2	Provide equitable, inclusive, affordable and universal access to high-quality early learning experiences
Goal 3	Address social determinants that impact children's health and learning
Goal 4	Strengthen Family-School-Community Partnerships
Goal 5	Demonstrate impact and achieve sustainability

Both Districts commit to:

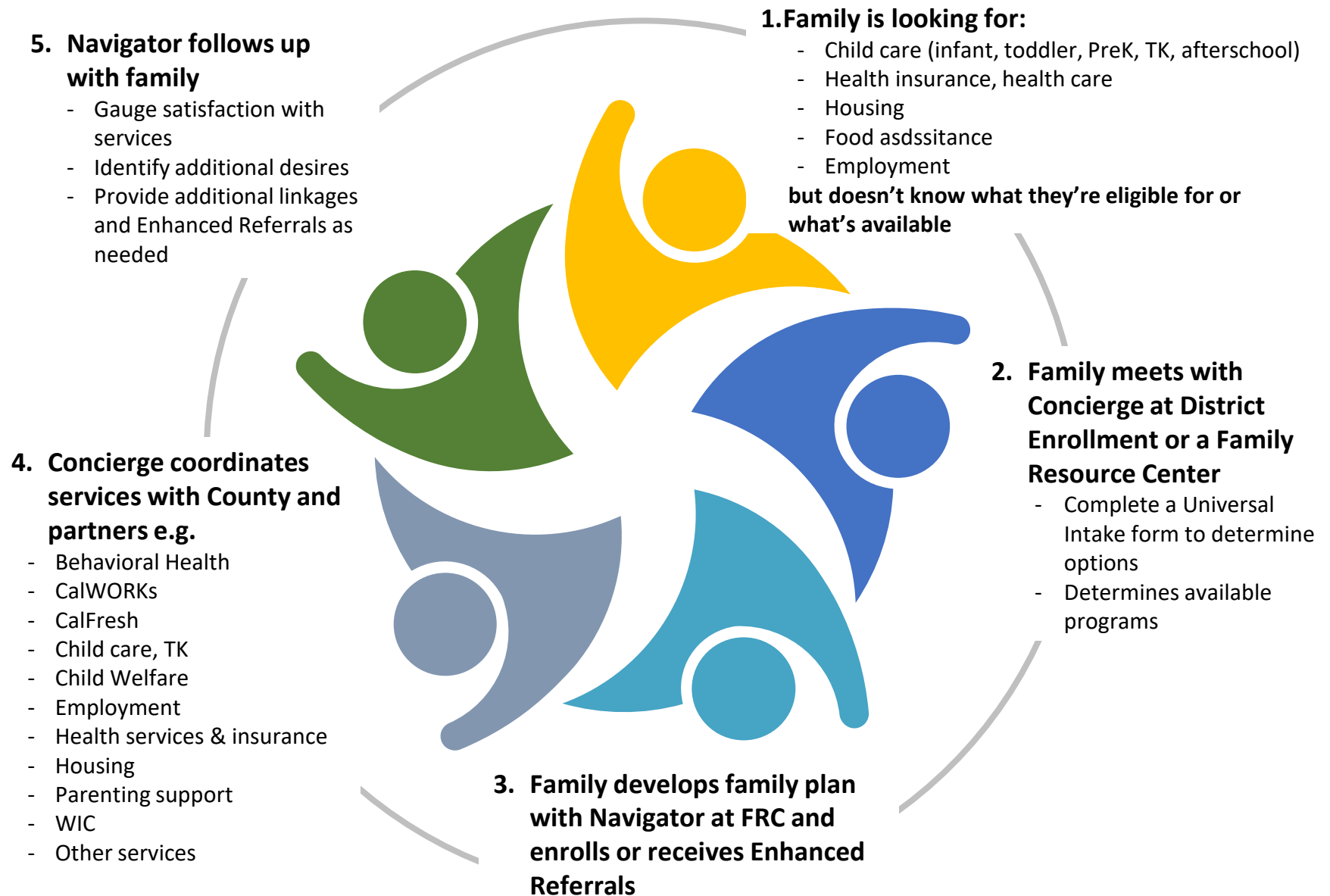
- Integrate enrollment of all high quality early care, education, health and social services
- Implement the Concierge Navigation Model as a service delivery model
- Utilize *Pathway to Success* as their framework
- Measure common metrics on the milestone outcomes to evaluate all efforts
- Connect Early Childhood & School Linked Services
- Train staff in Family Engagement and Directory of Services
- Improve protocols for coordination and communication among service providers (e.g., Health screenings)

Prenatal – 3rd Grade Pathway to Success



SYSTEM PILLARS: THE FOUNDATION OF A HIGH QUALITY PRENATAL – 3RD GRADE HEALTH & EARLY LEARNING SYSTEM¹³

Early Childhood Concierge Navigator Model for Universal Access



Responsive Prevention Opportunities: The Franklin McKinley School District Pilot

- Integrate an additional nurse to coordinate all health screening and health related challenges for families of children T-K thru 3rd grade
- Utilize two social workers (and 4-6 interns) dedicated to T-K thru 3rd grade to support families and students to:
 - Reduce chronic truancy
 - Address other educational barriers

Responsive Prevention Opportunities: The Alum Rock School District Pilot

- Open a preschool at Painter Elementary School that utilizes a cooperative model utilizing trained parents as staff working with a master teacher. The Co-Op preschool will serve families:
 - Above the 85% SMI (State Median Income), or
 - On waiting lists for state subsidized preschool, or
 - Who do not meet the *work* need criteria for state subsidized preschool.
- Parents will be trained and coached in SEEDS and subscribed to MyTeachStone.

Recommendations for Further Expansion of State Preschool

- Study Facilities Master Plan Report when it is published to identify opportunities for state preschool expansion sites that could draw down State subsidies
- Continue to engage parents' and providers' input and feedback
- Modify pilots ongoingly as data dictates

Questions & Feedback

